

Better Lighting Solution For Sport Field

Professional high mast light is required more and more for applications of sport field as it influences players' performance and contributes to the proper arbitrage. Spectators should enjoy the match safely and without inconvenience caused by glare effects or an uneven light.

Our optical system has been designed to ensure high power but minimize glare. And visor system is used to avoid back light and spill light.

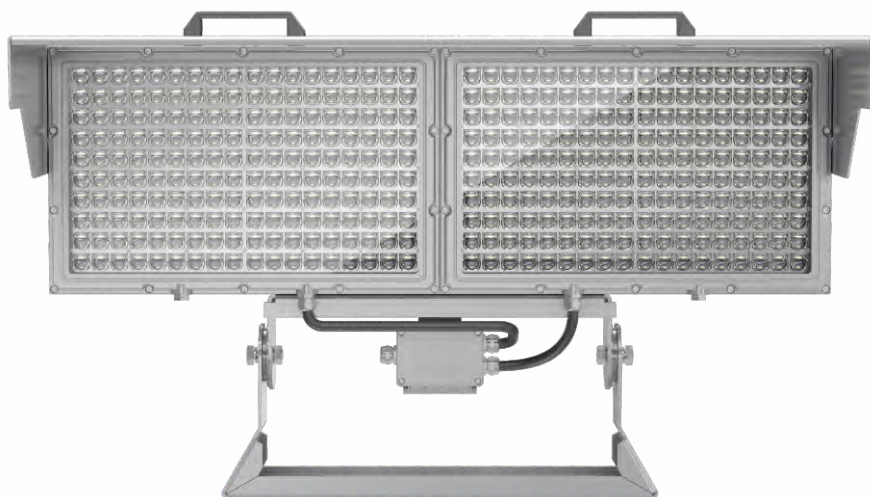
Best Light For Stadium

Low Glare

Low back light, low spill light

Asymmetric optics

Europe Design Patent



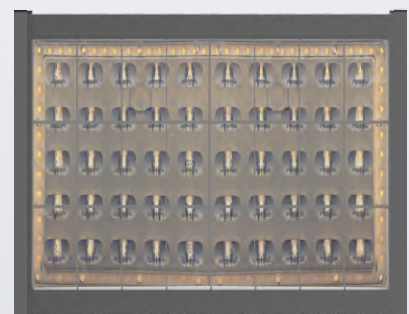
Tempered Glass
PMMA lens
Pure aluminum
Best heat dissipation



After 5 years



After 2 years



PMMA lens+Tempered Glass
Best UV resistance

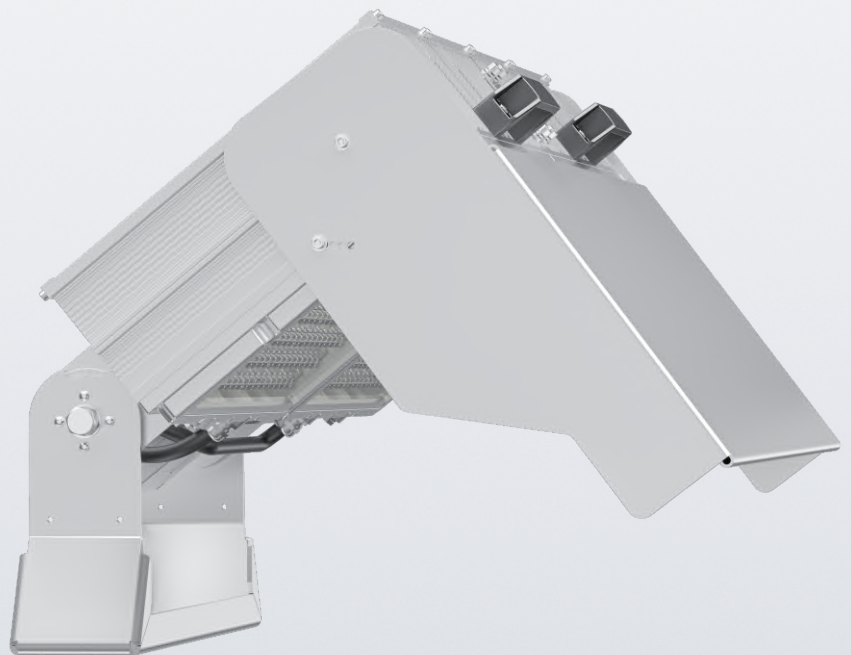
PC Lens, without glass
Low UV resistance



160LM/W

Driver: INVENTRONICS
LEDs: CREE

Precise Angle Rotation



Laser Sight

Easily adjust the direction
of illumination to achieve
maximum lux and uniformity

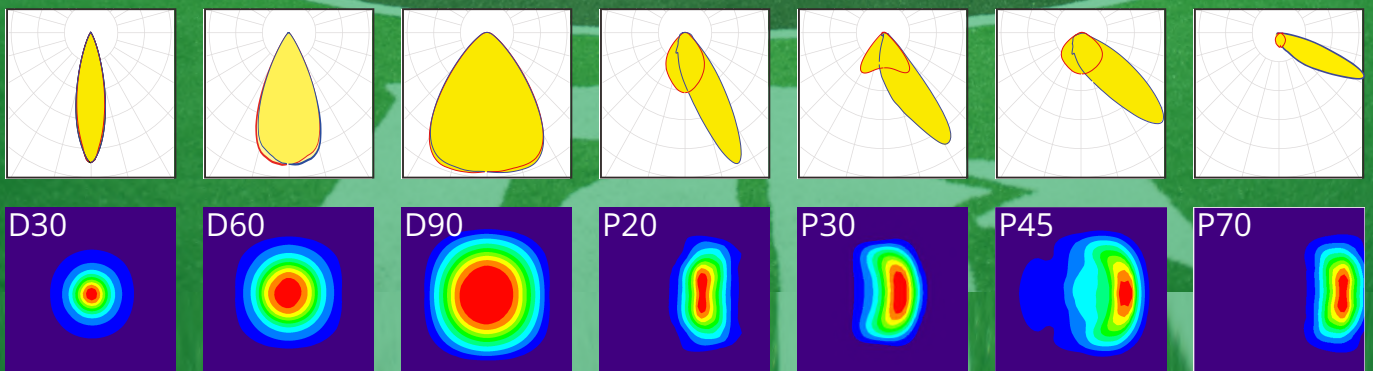


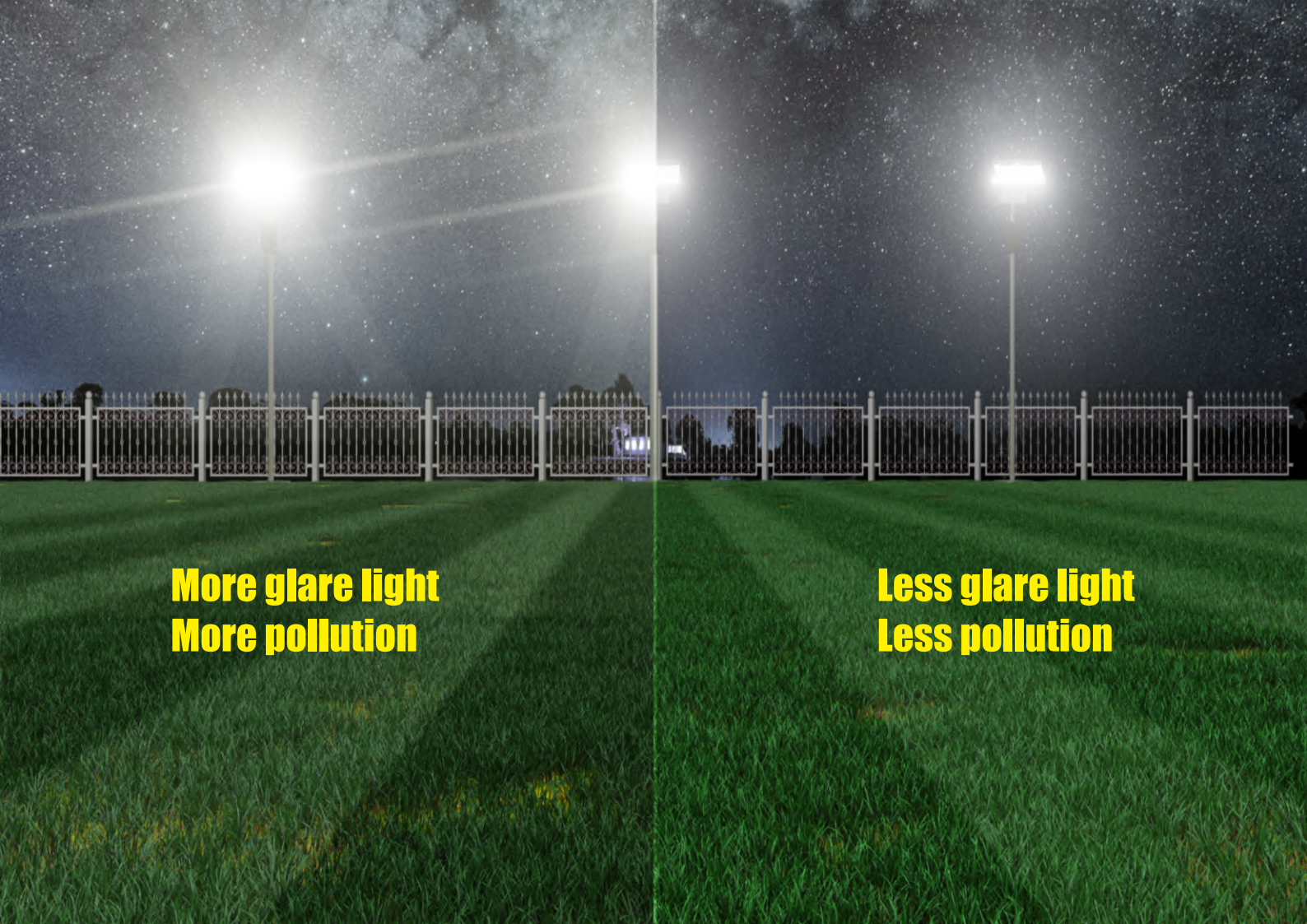
Rotatable Visor

Asymmetric polarized optics and visor work together to minimize glare, back light, and spill light.

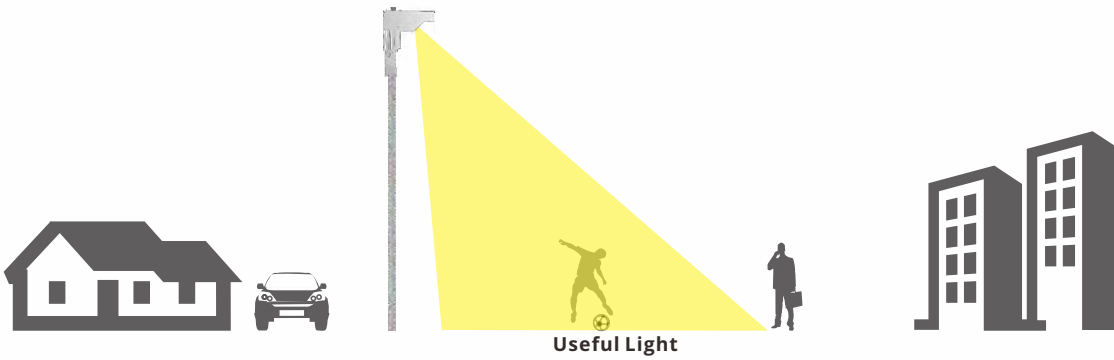
Optics

Special designed optics are used for different sport field and different standard. They will not only improve the lux and uniformity, but also minimize glare light.

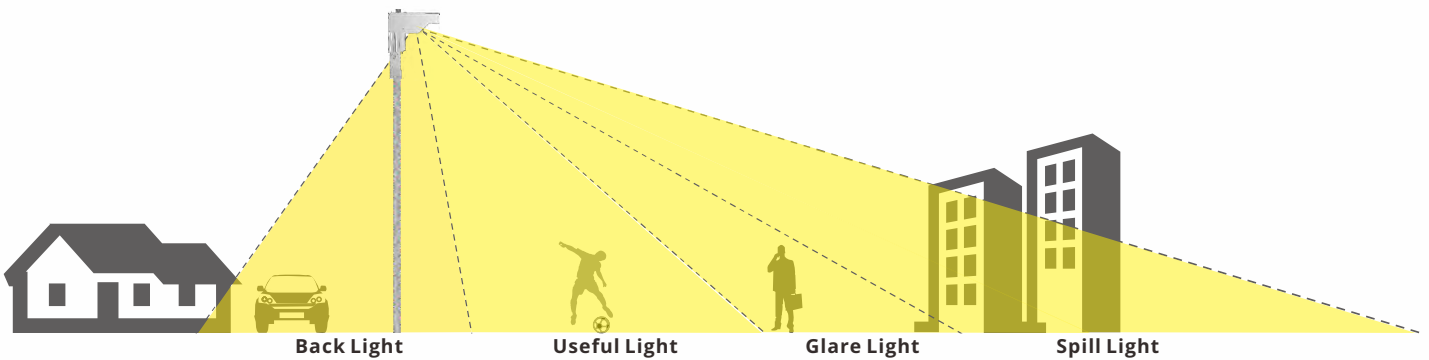




STADIUM Series



Others



IP66 Waterproof
10/20kv Surge Protection
AkzoNobel coating, best corrosion proof

TVS protection

Transient Voltage Suppressor(TVS) with 1500w peak pulse capability at 10/1000us waveform is used to protecting LEDs from voltage transient induced by lightning.

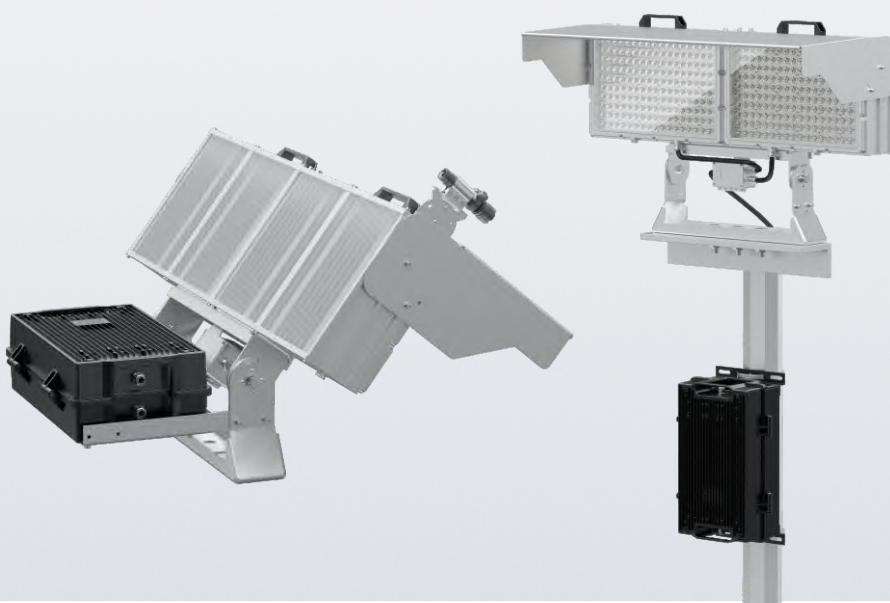


HD TV broadcasting

The LED source has an high TLCI index and a chromatic render index up to 90. This provides the camera with the real color of the scene and flicker-free shooting.



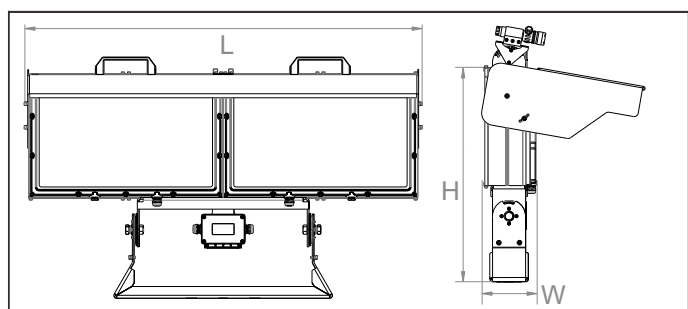
Driver box can be fixed on bracket or on pole in order to lower the weight of whole fixture and easy maintenance





Features

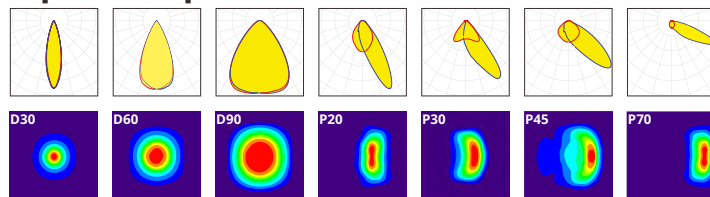
Housing: Pure Aluminum
 Thermal Conductivity: 226 W/m·K
 Led: Cree 5050
 CRI: Ra>70
 SDCM: <6
 Power Factor: >0.95
 THD: <15
 Driver: Inventronic
 Driver Efficiency: >93%
 Protection: OTP, OCP, OVP, SCP
 Surge Protection: 10KV
 Waterproof: IP66
 Impact Test: IK08
 Electrical: 100-277V, 50/60Hz
 Operating Temperature: -40~60 °C
 LED TM21: L90B10>110,000H
 Lifetime of driver: 50,000H



Functions

ZigBee · DMX · DALI · 0/1~10V

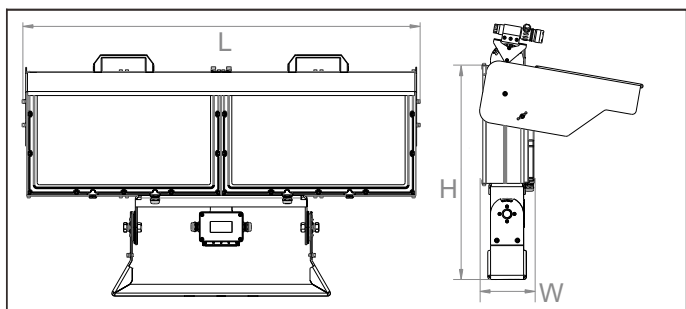
Optical options:



Model	Watt	Voltage	Lumen	CRI	IP	Dimension
ST500SE1G-CI	500W	100~277V	80000LM	>70	IP66	470*524*127
ST600SE1G-CI	600W	100~277V	96000LM	>70	IP66	470*524*127
ST1K0SE2G-CI	1000W	220~240V	160000LM	>70	IP66	920*558*127
ST1K2SE2G-CI	1200W	220~240V	192000LM	>70	IP66	920*558*127

Note: Asymmetric optics are 150lm/w

Packing



Luminaire

Model	Dimension (mm)	Outer Carton(mm)			QTY / Outer CTN	Luminaire	
		L	W	H		NW(kg)	GW(kg)
ST500SE1G-CI	470*520*127	560	235	615	1	14.80	16.30
ST600SE1G-CI	470*520*127	560	235	615	1	14.80	16.30
ST1K0SE2G-CI	920*558*127	1010	235	655	1	27.50	29.60
ST1K2SE2G-CI	920*558*127	1010	235	655	1	27.50	29.60

Driver

Model	Dimension (mm)	Outer Carton(mm)			QTY / Outer CTN	Driver	
		L	W	H		NW(kg)	GW(kg)
600W Driver Box	410*280*136.8	480	300	200	1	7.10	8.70
1200W Driver Box	410*280*136.8	480	300	200	1	7.70	9.30