



# Nezzo

A street Light with combination of high efficiency  
and cost effective

Walker



# KEY FEATURES

---



4 sizes,  
full wattage 20W-230w  
High efficiency up to 160lm/w

160  
LM/W



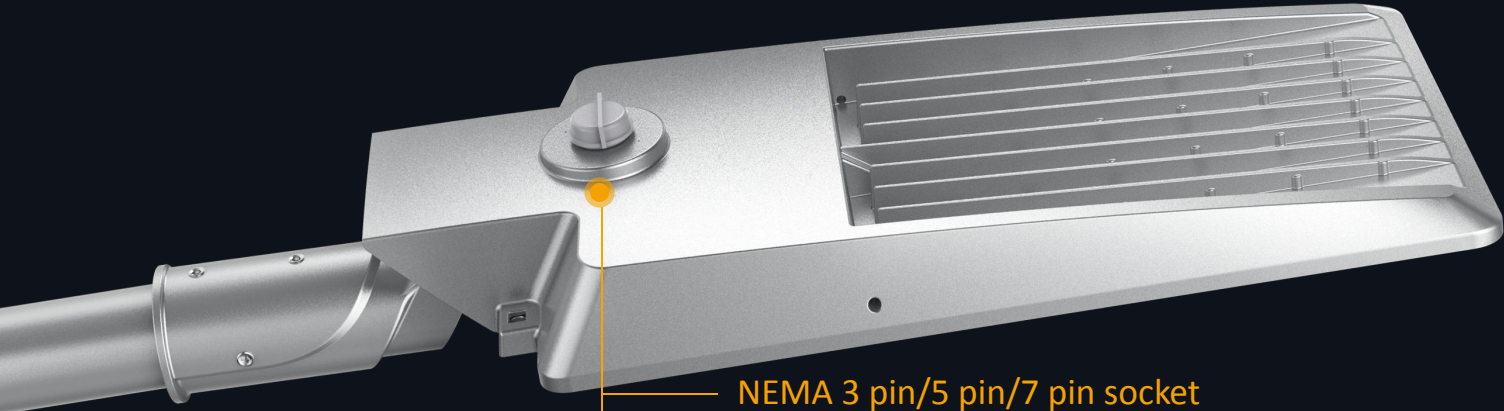
✓ Cost  
effective

20-230W





# Multiple Intelligent Control



- NEMA 3 pin/5 pin/7 pin socket
- LoRa Standard
- Zhaga



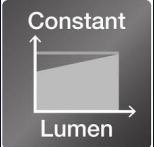
Wicrowave or PIR sensor



Pretection Class I or Class II



Compatitible with Zhaga Standard



Constant Lumen Output Function Available



PIR sensor: motion detection



Compatitible with LoRa Standard



Compatitible with 3-pin / 5 pin / 7-pin NEMA socket



Dali dimming



Step / Time dimming available



Over temperature protection



# PRODUCT FEATURES

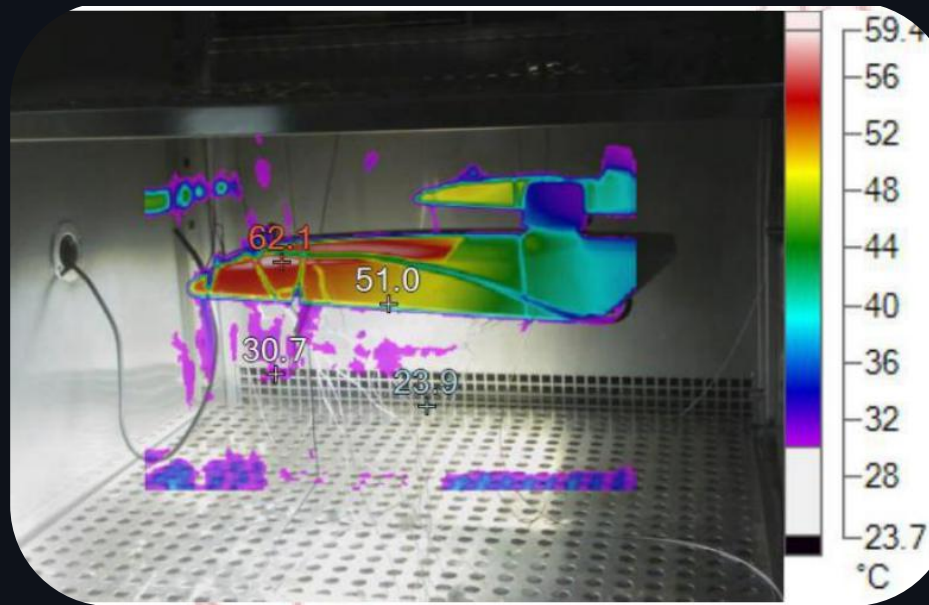
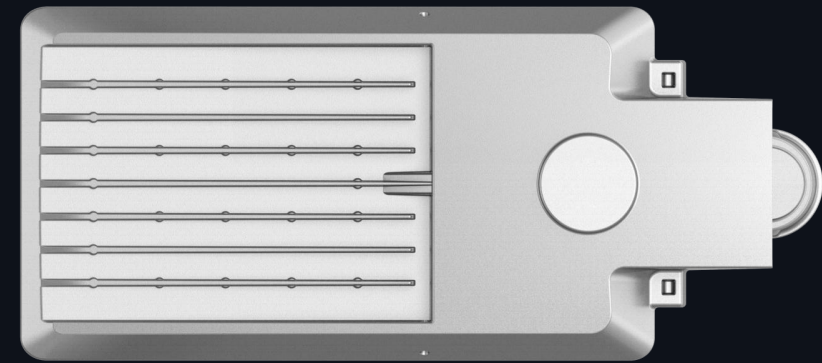
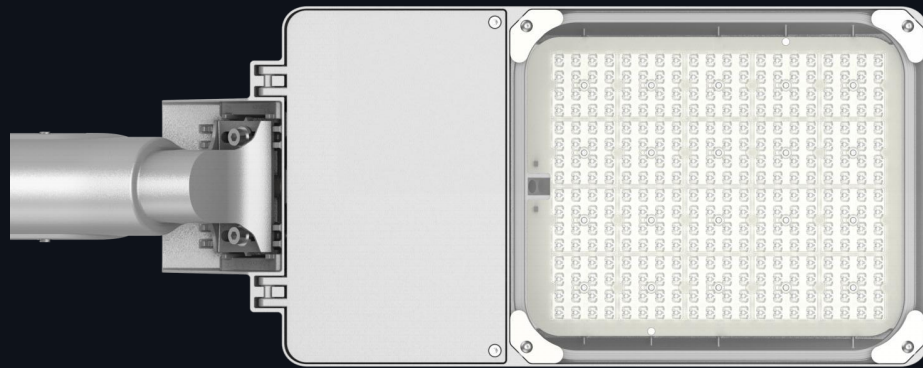
---

# Parameters

Item	Nezzo-Mini	Nezzo-S	Nezzo-M	Nezzo-L
Power	20/30/40W (Class I/Class II)	60/75/100W (Class I/Class II)	120/150/180W (Class I) 120W (Class II)	200/230W(Class I) 150/180/200W(Class II)
Color	silver(RAL9006)			
Lighting Efficiency	160lm/W			
CCT / CRI	1800-4000K, Ra70			
Input Voltage	100-277VAC/220-240VAC, 50/60Hz			
Protection Class	IP66, IK09, 10KV			
Certificate	CE, RoHs CB, ENEC			
Intelligent Control	1-10V, DALI, Photocell, Motion/PIR sensor, Timing Control, Zhaga, Nema.			
LED Chips	Lumiled Philips 3030, 3535/5050 optional			
Optic	Modular lens, Type I II III IV V			
Driver	PHILIPS Xi_LP/PHILIPS Xi_FP/TRIDONIC LCO/SOSEN VP			
Pole	Ø34-76mm			
Working Temperature	-30°C~+50°C for Class I version, -30°C~+40°C for Class II version,			

# Structure Features

Elegant Appearance Design With Excellent heat dissipation



	test 1 (°C)	Test 1 rise(k) 温升	test 2 (°C)	Test 2 rise(k) 温升	limits
1.LED Case	40.004	14.157	65.914	14.906	105
2.LED Case	41.269	15.422	67.446	16.438	105
3.LED Case	39.694	13.847	65.614	14.606	105
4.PCB of module	39.882	14.035	66.055	15.047	120
5.Input wire of LED module	39.037	13.19	64.488	13.48	90
6.External surface of lens	41.289	15.442	67.019	16.011	120
7.Driver Tc	39.77	13.923	63.283	12.275	90
8.Driver case	39.567	13.72	62.907	11.899	90
9.Driver case	38.945	13.098	62.34	11.332	90
10.Internal temperature of driver box	39.211	13.364	62.439	11.431	Ref.
11.Enclosure of luminaire	33.191	7.344	57.703	6.695	90
12.Ambient temperature	25.847	--	51.008	--	--

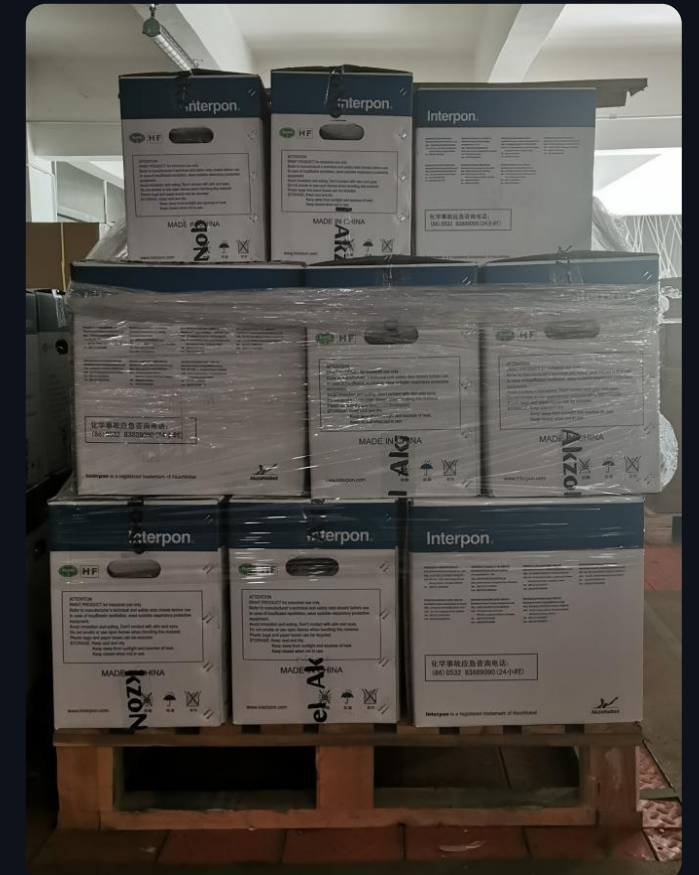
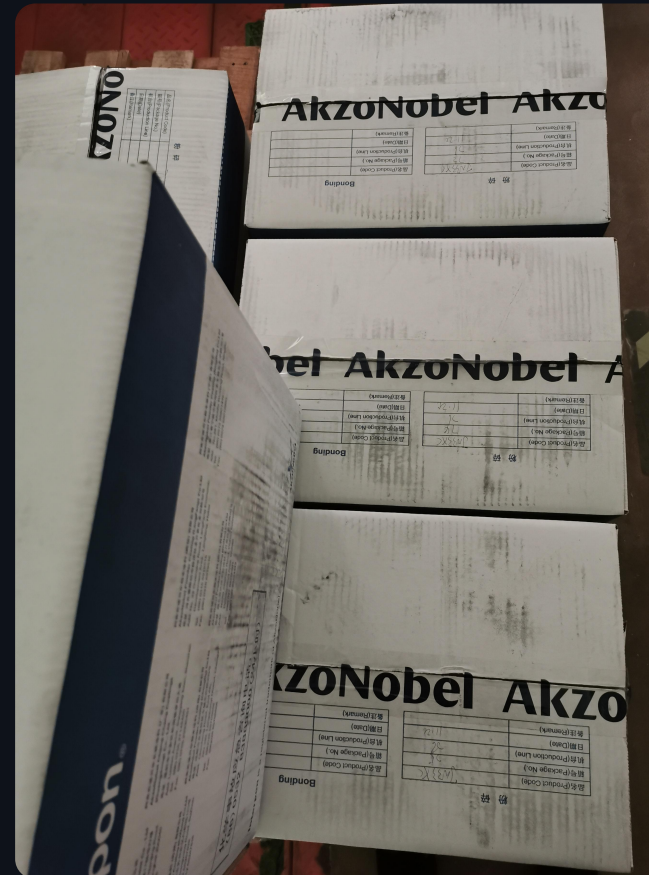


# Structure Features

## Strong Anti-corrosion Ability

With **AKZO powder** adopted,enable it pass **500 hrs salt spray test**.

If use E- painting + Powder coating process, it can pass **1,000 hrs salt spray test** and can be used near the coastline.





# Structure Features

Removable metal gear plate, easy to maintain.



## Anti-lost screws

A rubber ring is added to the screws to avoiding the screw lose.



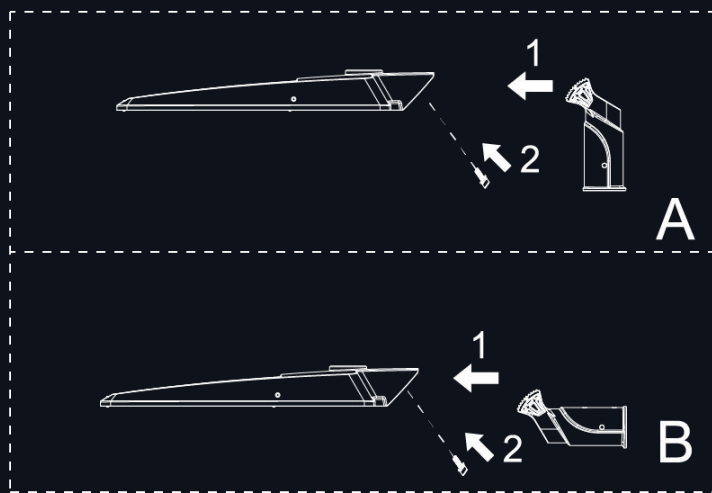
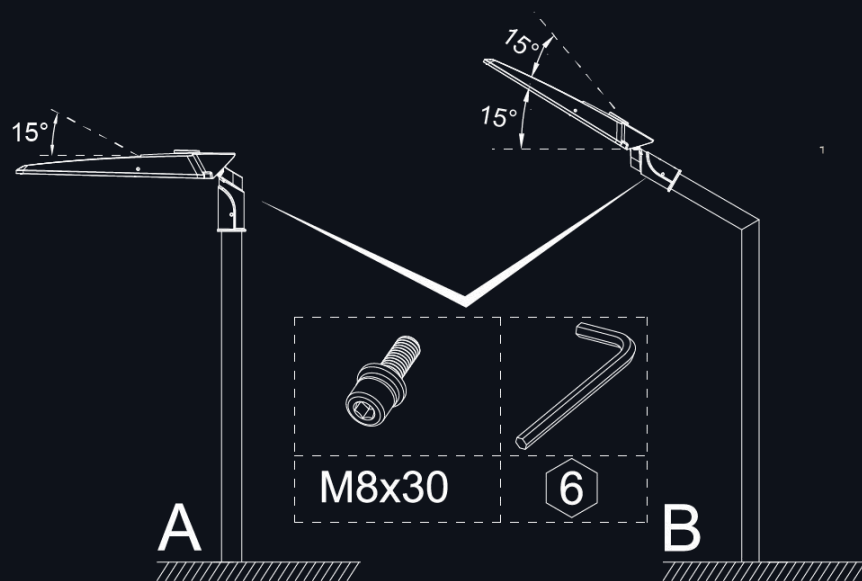
## Vent

Vent help to balance the atmosphere pressure and avoid moisture inside the fixture

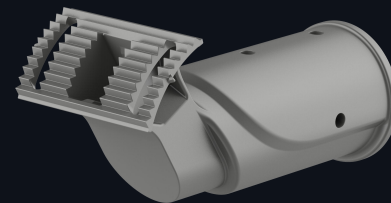
# Structure Features

## Two Installation with one Spigot

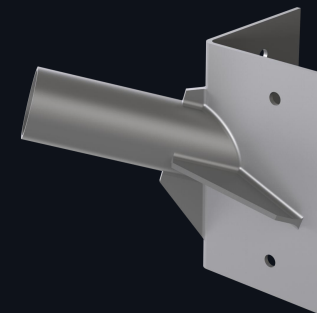
The spigot can be installed for both entry side or post-top, and it can be adjustable in 5° steps with precise angle scale from 0° to 15°



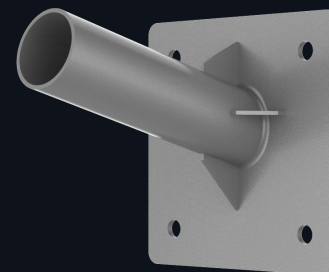
## Fit to different Size of Pole



34mm, 42mm, 60mm & 76mm Spigot.



Wall Mount.



Corner Mount.



60mm, 76mm & 100mm  
2 Lights Pole Adaptor.



60mm & 100mm 1 Light Pole Adaptor.



# Structure Features



IP66



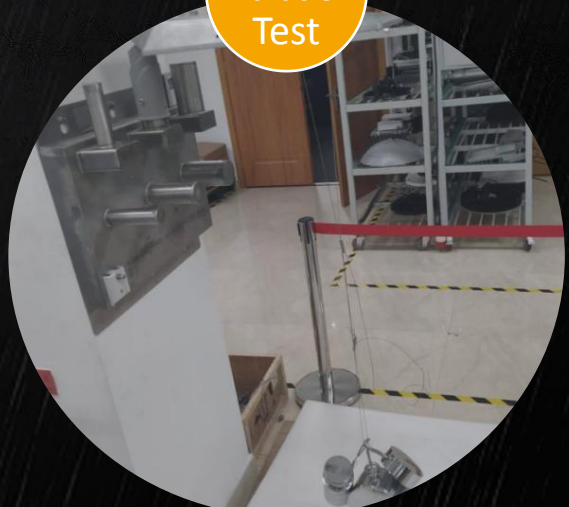
IK09



Loading  
Test



3G  
Vibration  
Test

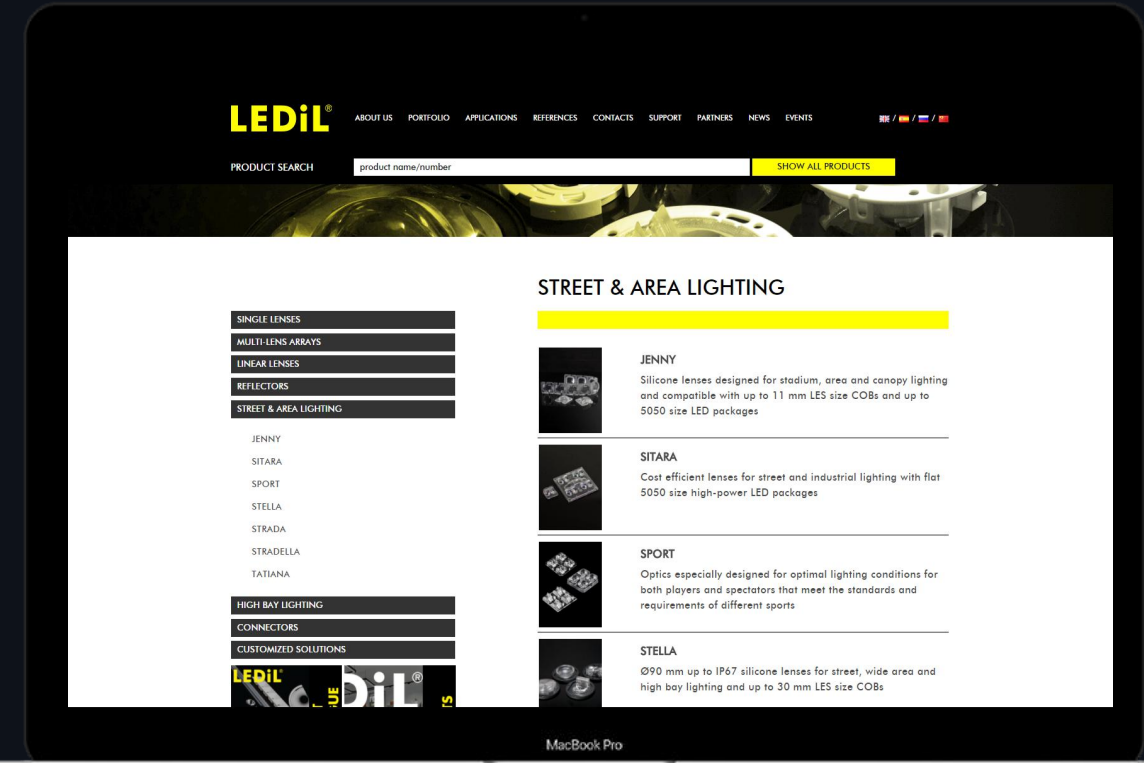
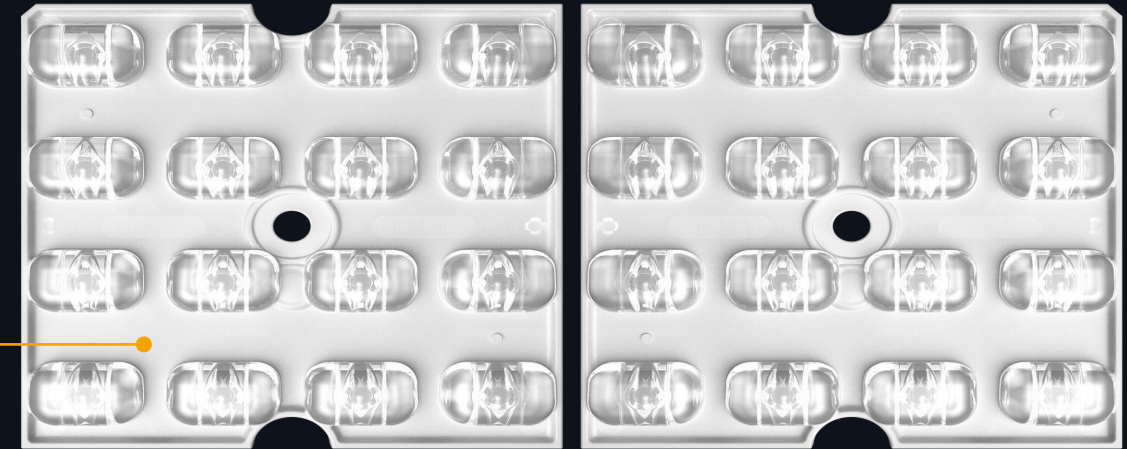
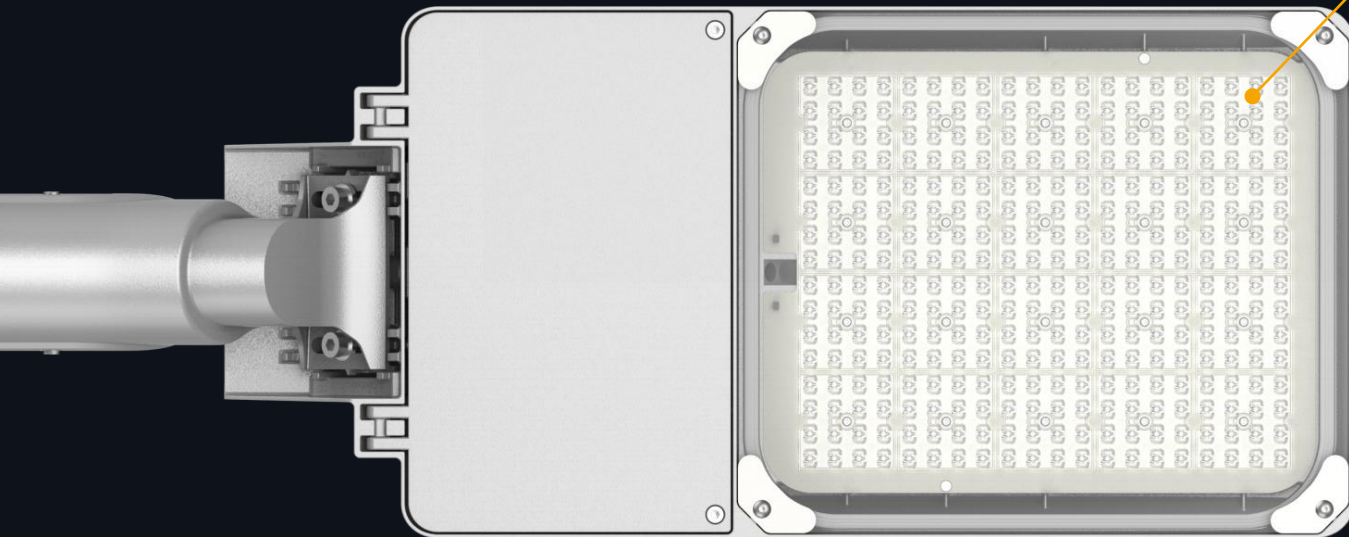




# Optical Features

## High Compatibility With Modular Optic LENS

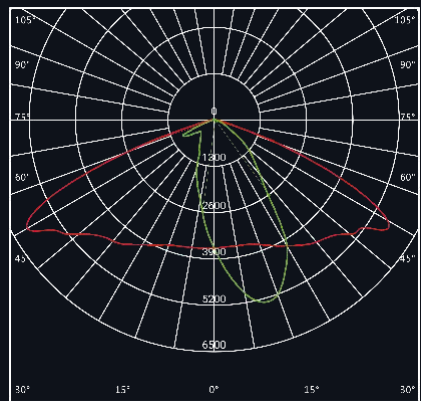
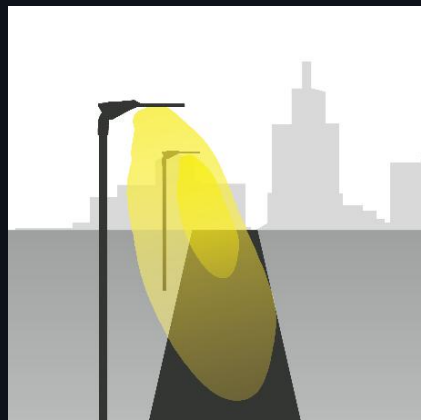
The Nezzo luminaires are equipped with modular optic lens and can adopt 3030, 3535, 5050 chips. This flexibility ensures that the light distributions are specifically adapted to the real needs of the area to be lit.



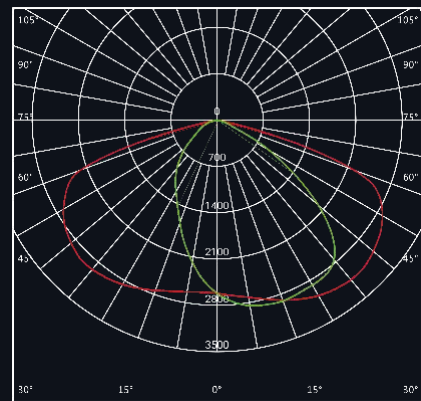
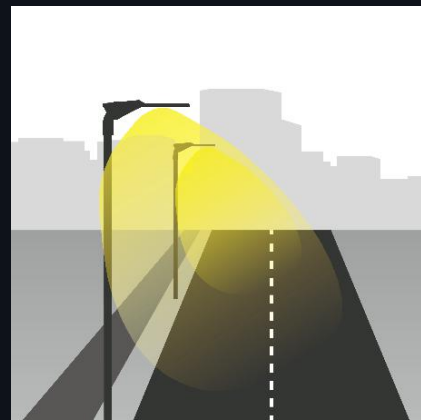


# Optical Features

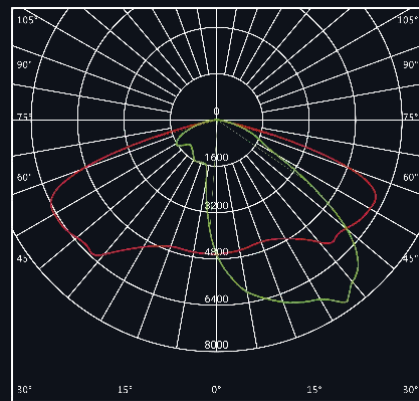
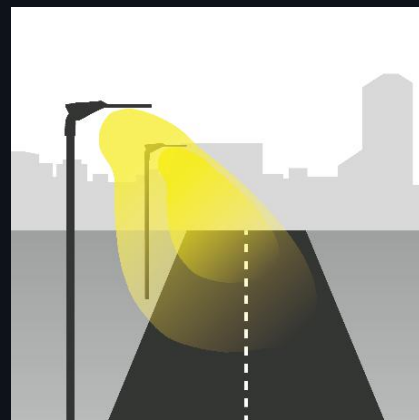
## Numerous Lighting Distributions



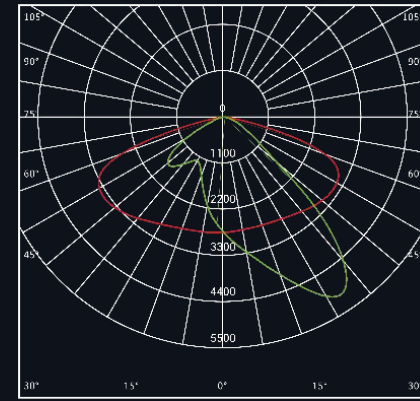
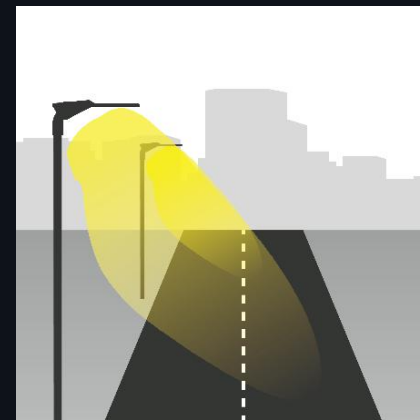
R01601  
Type I short



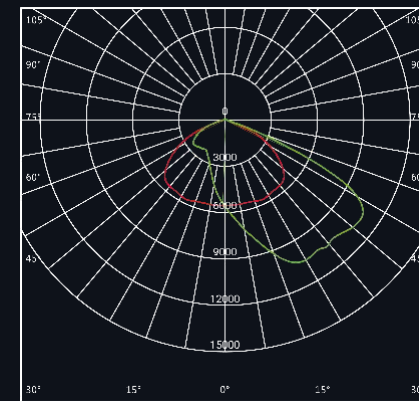
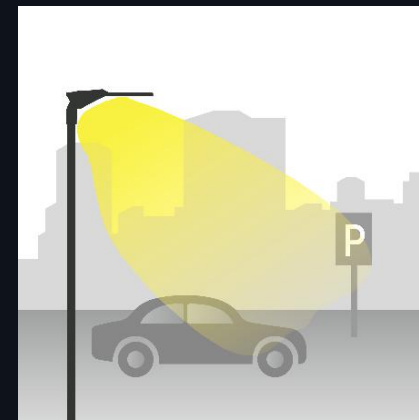
R01602  
Type II Short



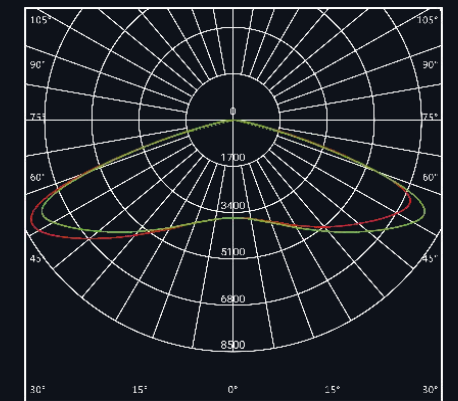
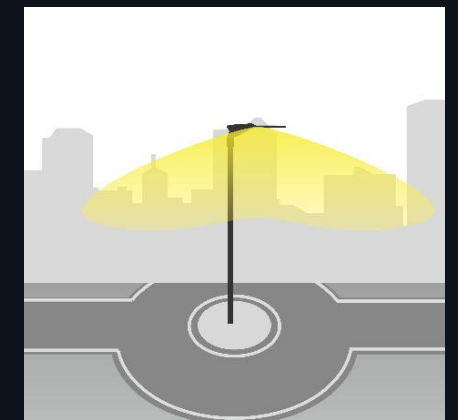
R01603  
Type II Short



R01610  
Type II Short

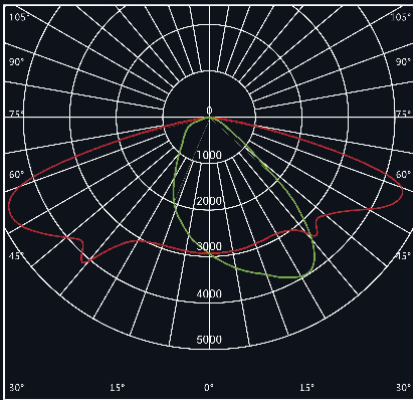
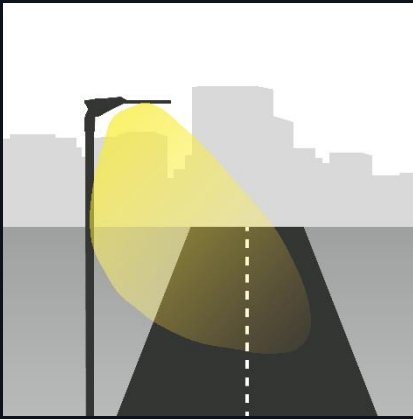


R01604  
Type IV Short

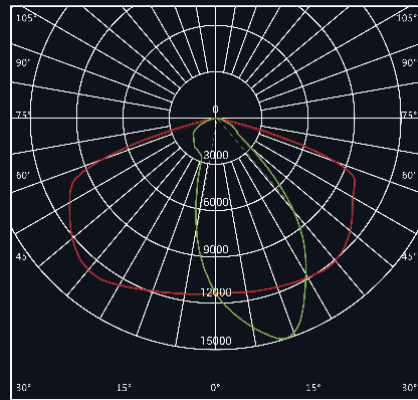
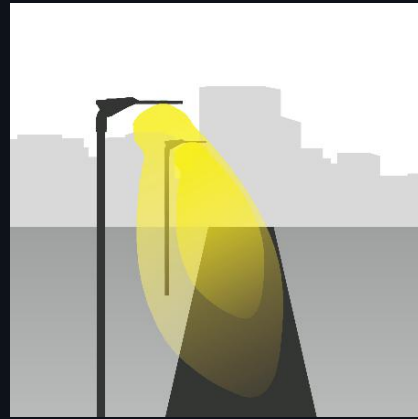


R01605  
Type V Short

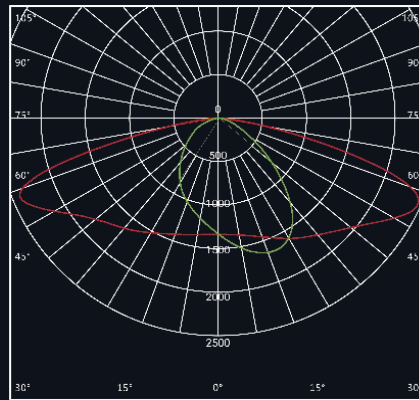
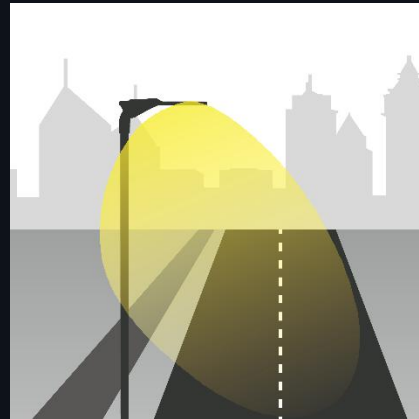
# Optical Features



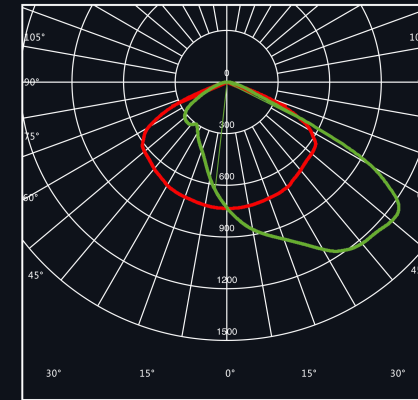
R01606  
Type II Short



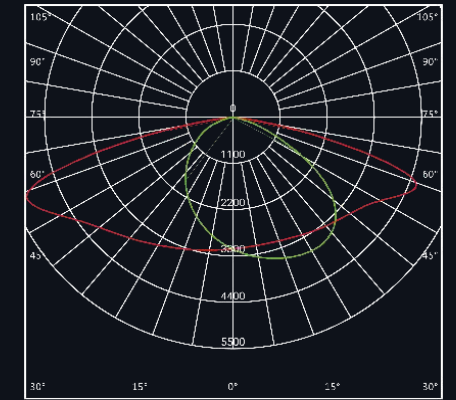
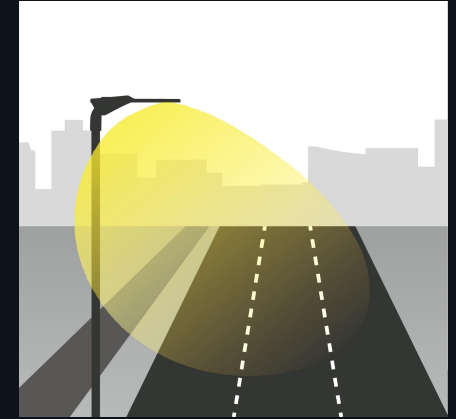
R01609  
Type II Short



R01611  
Type II Medium,



R01607  
Type III Short



R01613  
Type III Medium

Customization is available for exact project

# Electronic Features

---



## Multiple Drivers

Multiple drivers are considered to meet different projects needs also, such as MOSO/Philips/Tridonic/Sosen.

**MOSO**<sup>®</sup>

**TRIDONIC**

**PHILIPS**

 **SOSEN**

**INVENTRONICS**

# Product Features

---

- Full wattage 20w/30w/40w/60w/75w/100w/120w/150w/180w/200w/230w.
- Excellent heat dissipation, Robust and durable luminaire design, passed 3G vibration test.
- Removable metal gear plate, easy to maintain.
- IP66, IK09 and 10KV surge protection.
- High output lumen efficiency, up to 160lm/W.
- Professional light distribution.
- Range of modular optics and tilt capability facilitate optimisation of lighting design.
- Variable tilting setting:  $-15^{\circ}$  to  $+15^{\circ}$  on post top and side entry mounting, in  $5^{\circ}$  steps. Spigot Size ( $\text{\O}34\text{mm}$ ,  $\text{\O}42\text{mm}$ ,  $\text{\O}60\text{mm}$  and  $\text{\O}76\text{mm}$ ).
- Multiple intelligent control (photocell, plug and play microwave/PIR sensor, Dali, 0-10v dimmable, Timer dimming, Nema, Zhaga/LoRa and programmable driver) used to minimize of power consumption.
- Protection Class I or II.